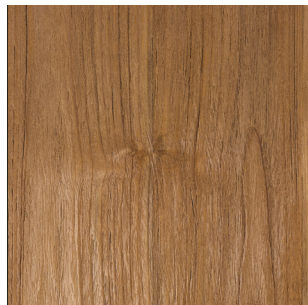


## Tischplattenmuster

---



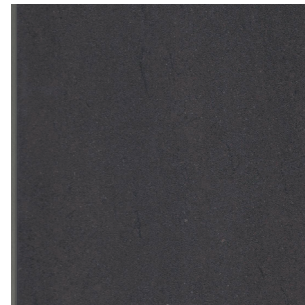
Premium Teak 11 (28 mm)



Vintage Teak 12 (28 mm)



Unikattischplatten Teakholz  
12BK (40 mm)



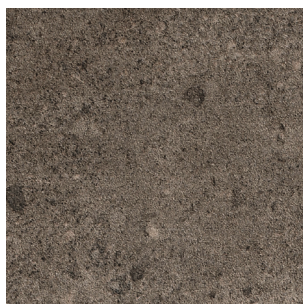
fm-ceramtop Lava nero  
19 (6mm) und 85 (12mm)



fm-ceramtop Paros natural  
65 (6mm)



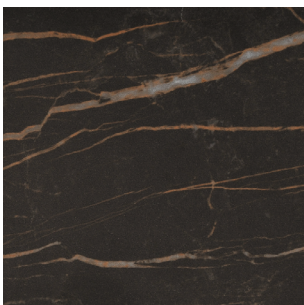
fm-ceramtop Paros shadow  
66 (6mm)



fm-ceramtop Paros tabacco  
84 (6mm) und 88 (12mm)



fm-ceramtop pearl  
86 (6mm) und 82 (12mm)



fm-ceramtop marrone  
87 (12mm)



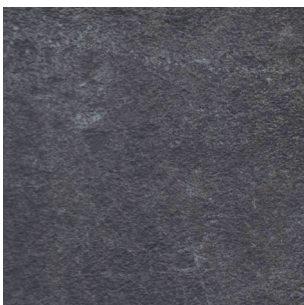
fm-ceramtop rocco  
89 (12mm)



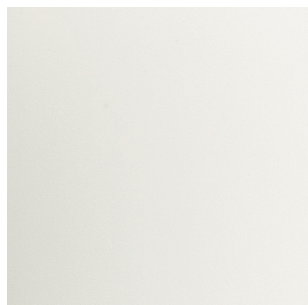
fm-ceramtop Loft grey  
611 (12mm)



fm-ceramtop earth  
619 (12mm)



fm-laminat spezial graphito  
72 (12mm)



fm-laminat spezial weiß  
74 (13mm)



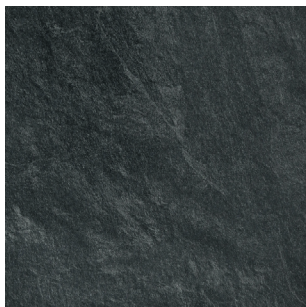
fm-laminat spezial titan  
75 (13mm)



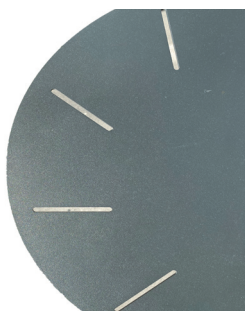
fm-laminat spezial zement  
76 (13mm)

## Tischplattenmuster

---



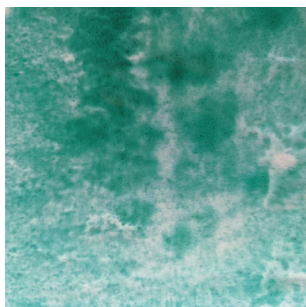
fm-laminat spezial ardesia  
79 (13mm)



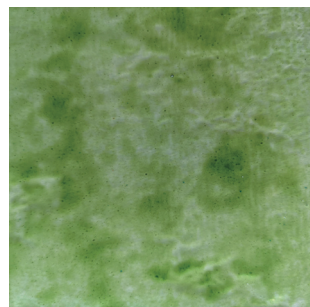
Aluminium anthrazit matt  
Strukturlack 80AS  
(4 mm)



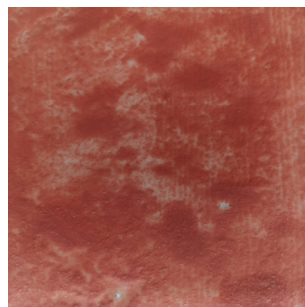
Aluminium weiß matt  
Strukturlack 80WS  
(4 mm)



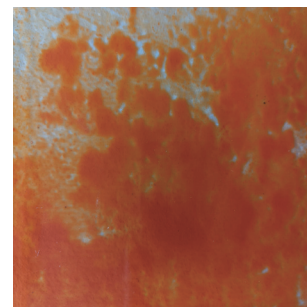
Glasplatte (6 mm)  
Mint 382  
Breda und Trios



Glasplatte (6 mm)  
Olive 383  
Breda und Trios



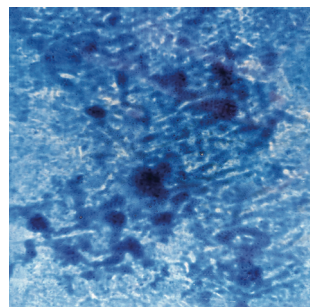
Glasplatte (6 mm)  
Chili 384  
Breda und Trios



Glasplatte (6 mm)  
Apricot 385  
Breda und Trios



Glasplatte (6 mm)  
Honey 386  
Breda und Trios



Glasplatte (6 mm)  
Blueberry 381  
Breda und Trios